



Multi-carrier Expansion

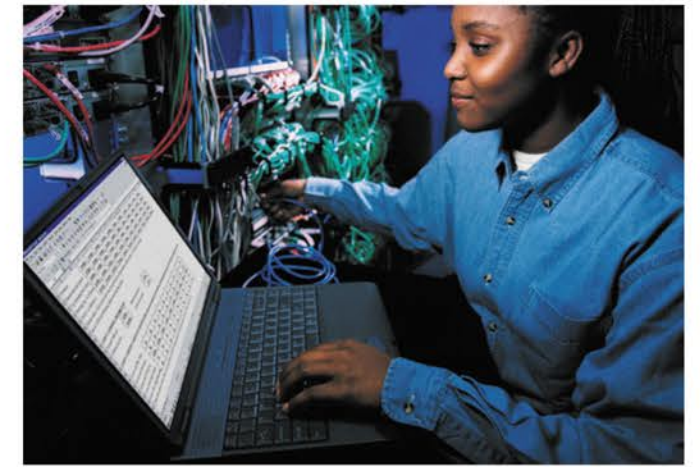
BF-TR951 can flexibly upgrade and expand system capacity based on user requirements, supporting up to 8 carriers, and meets the application requirements in high user density areas and high traffic assurance zones while carrying a larger volume of Trunking services.

Stackable Unit

The BF-TR951 has its main units distributed within the cabinet, including the base station control unit, channel unit, power supply unit, and RF transceiver system. These units are installed in a stacked configuration, ensuring more flexible base station construction even when cabinet resources are limited.

Military Grade

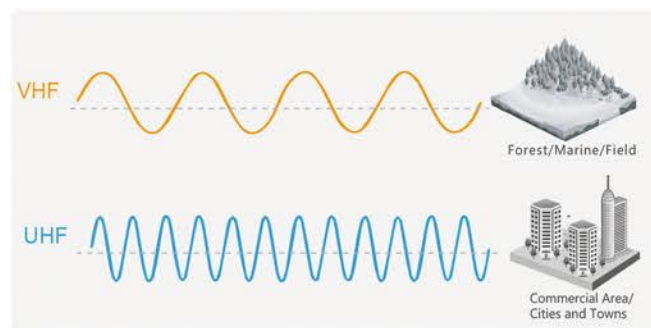
The BF-TR951 digital base station is designed with military-grade, featuring an all-cast aluminum structure to endure high-intensity operation. With excellent heat dissipation, it guarantees stable operation even when the internal cooling facility fails.



FEATURES

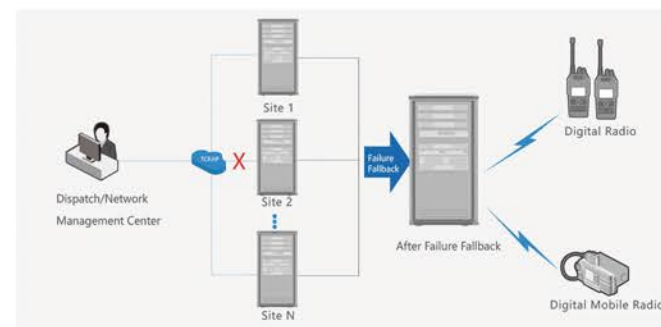
UHF/VHF Band, Wider Coverage

The BF-TR951 base station provides Trunking communication coverage in VHF or UHF frequency bands, effectively addressing network coverage issues in different scenarios of mountains and city areas. Providing more efficient daily management and command dispatch, as well as enhancing remote management and control capabilities.



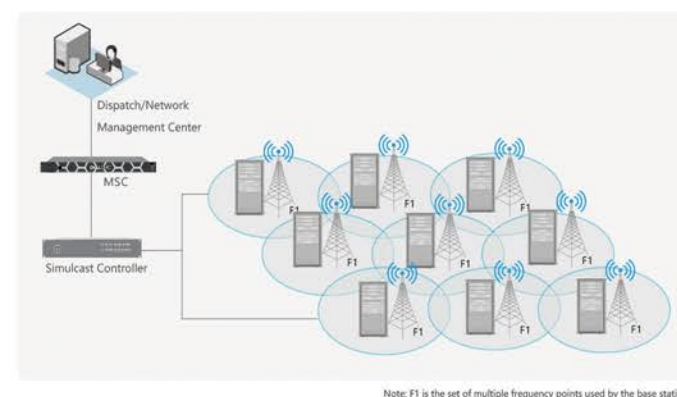
Enhanced Failure Fallback

The BF-TR951 base station features failure fallback technology that allows it to automatically enter failure fallback mode when the core network link fails or the base station and core network transmission fails; When the localized channel unit fails, it only reduces the channels without affecting the base station's functionality; When the base station is disconnected from the core network, the whole station can fallback to the one-site mode.



Simulcast Technology

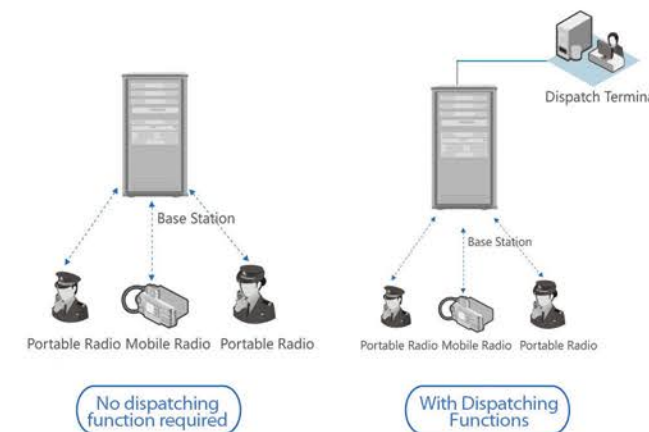
The BF-TR951 fundamentally solves issues related to same-frequency base station coverage and networking. It allows adjacent base stations to be deployed at the same frequency, ensuring smoother transitions between terminals and base stations. Enhancing signal coverage and quality, guaranteeing multi-point coverage, and making the signal more even. This technology enables all-network communication with a single call, eliminates co-channel interference in overlapping signal areas between base stations, and automatically switches to single-site mode when a base station fails, effectively improving frequency utilization and reducing extra frequency application and occupation.



CORE NETWORK

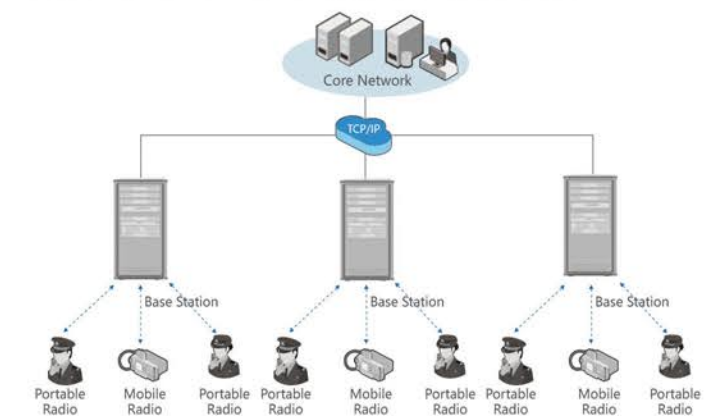
One-site networking solution

Flexibly networked based on user requirements and achieve one-site networking application.



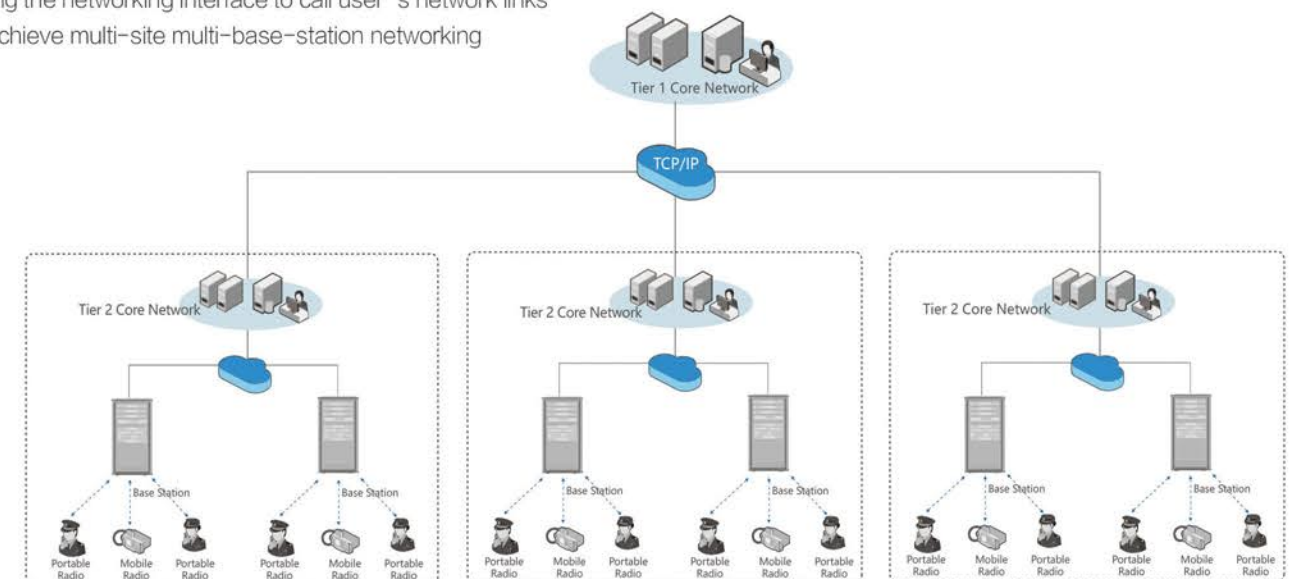
One-Site Multi-Base-Station Solution

Networking through the core network, connecting to the core network to achieve multi-base station networking within a single area. The maximum networked base stations are 500.



Multi-Site Multi-Base-Station Solution

Utilizing the networking interface to call user's network links and achieve multi-site multi-base-station networking



SPECIFICATION

General		Receiving	
Frequency Range	VHF: 136-174MHz UHF3: 350-400MHz UHF1: 400-480MHz	Static Sensitivity	≤ -116dBm@3%BER
Carrier Frequency	1-4 (Up to 8 customized carriers for one site)	Dynamic Sensitivity	-108dBm@BER5%
Multi Access Mode	TDMA	Receiving Dynamic Range	≥ 100dB
Time Slots	2/ Carrier Frequency	Stepped Frequency	12.5kHz
Modulation	4FSK, Modulation Index: 0.27	Co-Channel Interference Suppression	-12dB - 0dB
Carrier Spacing	Cavity Combiner: ≥250kHz Wideband Combiner: ≥25kHz	Adjacent Channel Selectivity	≥60dB@12.5kHz
Operating Bandwidth	2MHz (VHF) /5MHz (UHF)	Intermodulation Response Rejection	≥70dB
Duplex Spacing	5.7MHz (VHF) /10MHz (UHF)	Block	≥95dB
Working Voltage	220V AC	Spurious Response Immunity	≥70dB
Maximum Power Consumption	4 Carrier Frequency ≤800W	Spurious Emission	9.00kHz ~ 1.00GHz: ≤ -57dBm@100kHz 1.00GHz ~ 12.75GHz: ≤ -47dBm@1MHz
Working Temperature	0°C ~ +60°C	Receiving	
Storage Temperature	0°C ~ +70°C	Rated Transmit Power	50W
Humidity	5%RH ~ 100%RH	FSK Error	≤5%
Atmospheric Pressure	79.5kPa ~ 106kPa	Occupied Bandwidth	≤8.5kHz
MTBF	100000 Hours	Maximum Frequency Deviation	±3.15kHz
MTTR	30 Minutes	Frequency Deviation	≤ ± 100Hz
Dimensions(W*H*L)	22U Rack: ≤600mm*600mm*1430	Intermodulation Attenuation	≤ -60dB
Interface		Adjacent Channel Ratio	≤ -65dB @ 12.5kHz;
Transceiver RF Interface	N-Female	Frequency Stability	0.5ppm
GNSS Synchronous Interface	TNC-Female	Adjacent Channel Power Ratio	≤ -65dB@12.5kHz
Interface With MSC	RJ-45 (Ethernet Interface)	Spurious Emission	≤ -36dBm@100kHz ≤ -30dBm@1.0MHz

Note: The above specification is tested by the trial standard. Due to the continuous development of technology, the data provided are for reference only.



BF-TR951 DMR Stackable Trunking Base Station



The BF-TR951 DMR fixed stackable base station supports PDT Trunking/DMR Trunking. It is the ideal choice for wide-area Trunking networking and large-capacity indoor deployment. The BF-TR951 delivers rich applications including voice communication, Trunked dispatching, data transmission, network management, and positioning systems, provides reliable communication guarantee and efficient data transmission for mission-critical users to work with safety and efficiency.

- U/V Band, Wider Coverage
- Multi-Carrier Expansion
- Enhanced Failure Fallback
- Military Grade, Great Heat Dissipation
- Stackable Units, Flexible Installation
- Simulcast Solution, Higher Frequency Utilization



Plot 709 unit 11, audi centre
independence avenue kasane

P.O Box 744, Kasane
Mobile: +267 73 964 058

Email: clintandadamgroup@gmail.com
mntema2008@gmail.com

www.logancomms.com



Engineering
Communication
Solutions



Engineering
Communication
Solutions